

SIGN #  
**38L**

**BILLBOARDS MAKE A**

**BIG IMPRESSION!**

**OUTDOOR ADVERTISING BILLBOARDS  
IN BOISE, MERIDIAN, NAMPA,  
FRUITLAND & PAYETTE, IDAHO**



Great left-hand read on a popular alternative route toward east Nampa, heading out of the downtown business district.

## 215 CALDWELL BLVD, NAMPA, ID

SIGN #: 38L

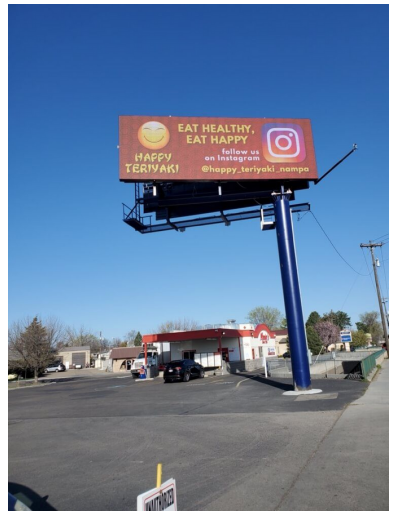
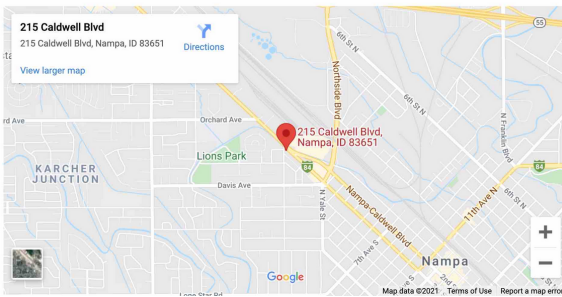
SIGN TYPE: DIGITAL

WEEKLY IMPRESSIONS: 88,897 PER SPOT

SIZE: 10' X 30'

SIGN FACING: **NORTH / LEFT**

LAT/LONG: 43.58804, -116.57778



**INTERESTED IN OUR SERVICES?  
WE'RE HERE TO HELP!**

### General Contact

P.O. Box 16661 Boise, Idaho 83715  
9601 W State St, Boise, ID 83714  
Phone: (208) 938-8880  
Fax: (208) 938-8890

### Administrative Team

David Wood or Raymond Usog  
(208) 938-8880

davidwood@canyonoutdoormedia.com  
raymondusog@canyonoutdoormedia.com

### Advertising

Raymond Usog | (208) 283-2927  
raymondusog@canyonoutdoormedia.com  
David Wood | (208) 401-5159  
davidwood@canyonoutdoormedia.com

### Real Estate

Curtis Massoud | (208) 938-8880  
info@canyonoutdoormedia.com