

SIGN #  
**26L**

BILLBOARDS MAKE A  
**BIG** IMPRESSION!

OUTDOOR ADVERTISING BILLBOARDS  
IN BOISE, MERIDIAN, NAMPA,  
FRUITLAND & PAYETTE, IDAHO



Excellent left-hand read at a busy intersection, Locust Grove is the alternative to taking Eagle Rd, one of the best options for crossing the I84 freeway. Sign reads to the "going to work" traffic pattern, heading in from Meridian and south Boise bedroom communities.

### N. LOCUST GROVE RD & FAIRVIEW AVE

SIGN #: 26L

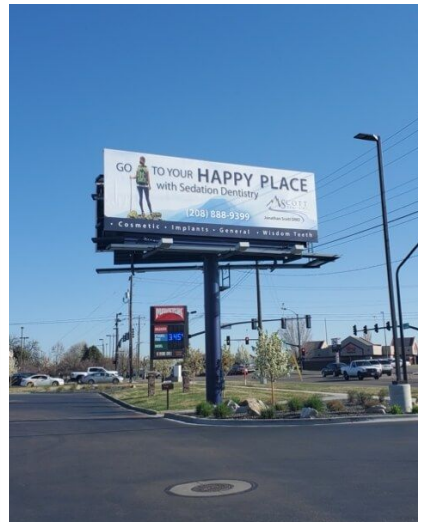
ILLUMINATED: YES

WEEKLY IMPRESSIONS: 88,268

SIZE: 10' X 30'

SIGN FACING: SOUTH / LEFT

LAT/LONG: 43.61915, -116.3747



**INTERESTED IN OUR SERVICES?  
WE'RE HERE TO HELP!**

#### General Contact

P.O. Box 16661 Boise, Idaho 83715  
9601 W State St, Boise, ID 83714  
Phone: (208) 938-8880  
Fax: (208) 938-8890

#### Administrative Team

David Wood or Raymond Usog  
(208) 938-8880

davidwood@canyonoutdoormedia.com  
raymondusog@canyonoutdoormedia.com

#### Advertising

Raymond Usog | (208) 283-2927  
raymondusog@canyonoutdoormedia.com  
David Wood | (208) 401-5159  
davidwood@canyonoutdoormedia.com

#### Real Estate

Curtis Massoud | (208) 938-8880  
info@canyonoutdoormedia.com