

SIGN #
25L

BILLBOARDS MAKE A
BIG IMPRESSION!

OUTDOOR ADVERTISING BILLBOARDS
IN BOISE, MERIDIAN, NAMPA,
FRUITLAND & PAYETTE, IDAHO



Excellent left-hand read situated at the intersection of Fairview Ave and Locust Grove Rd. Primary read is to the traffic heading west on Fairview Ave but this sign enjoys visibility from the three directions of traffic stopped at the light. Fairview Ave is a major east/west artery for commuters going between Boise and Meridian.

1515 E. FAIRVIEW AVE, MERIDIAN ID

SIGN #: 25L

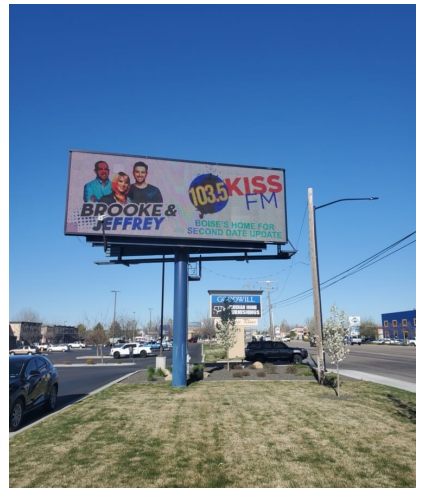
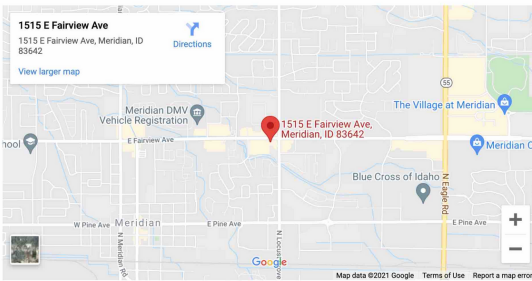
SIGN TYPE: DIGITAL

WEEKLY IMPRESSIONS: **128,720 PER SPOT**

SIZE: 10' X 30'

SIGN FACING: **EAST / LEFT**

LAT/LONG: 43.6194,-116.37508



**INTERESTED IN OUR SERVICES?
WE'RE HERE TO HELP!**

General Contact

P.O. Box 16661 Boise, Idaho 83715
9601 W State St, Boise, ID 83714
Phone: (208) 938-8880
Fax: (208) 938-8890

Administrative Team

David Wood or Raymond Usog
(208) 938-8880

davidwood@canyonoutdoormedia.com
raymondusog@canyonoutdoormedia.com

Advertising

Raymond Usog | (208) 283-2927
raymondusog@canyonoutdoormedia.com
David Wood | (208) 401-5159
davidwood@canyonoutdoormedia.com

Real Estate

Curtis Massoud | (208) 938-8880
info@canyonoutdoormedia.com