

SIGN #
16L

BILLBOARDS MAKE A

BIG IMPRESSION!

**OUTDOOR ADVERTISING BILLBOARDS
IN BOISE, MERIDIAN, NAMPA,
FRUITLAND & PAYETTE, IDAHO**



Left hand read on Nampa-Caldwell Blvd, the primary artery linking Nampa and Caldwell. Sign reads to traffic heading westbound. Heavy commercial, retail and residential traffic.

3011 CALDWELL BLVD, NAMPA ID

SIGN #: 16L

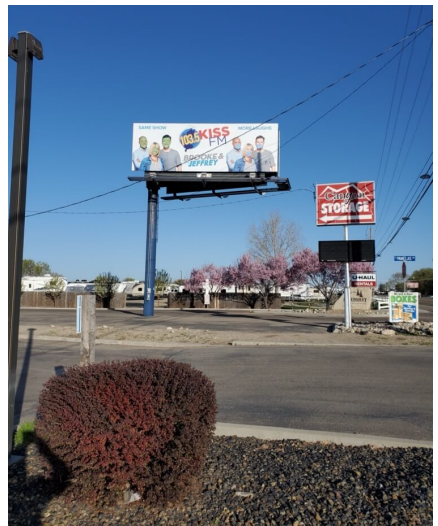
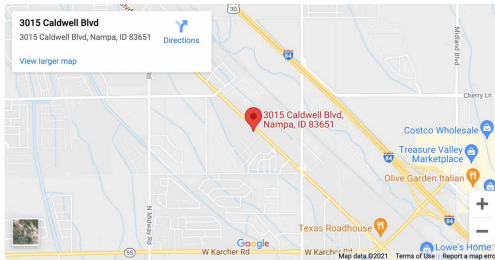
ILLUMINATED: YES

WEEKLY IMPRESSIONS: 71,875

SIZE: 10' X 30'

SIGN FACING: EAST / LEFT

LAT/LONG: 43.615976, -116.618740



**INTERESTED IN OUR SERVICES?
WE'RE HERE TO HELP!**

General Contact

P.O. Box 16661 Boise, Idaho 83715
9601 W State St, Boise, ID 83714
Phone: (208) 938-8880
Fax: (208) 938-8890

Administrative Team

David Wood or Raymond Usog
(208) 938-8880

davidwood@canyonoutdoormedia.com
raymondusog@canyonoutdoormedia.com

Advertising

Raymond Usog | (208) 283-2927
raymondusog@canyonoutdoormedia.com
David Wood | (208) 401-5159
davidwood@canyonoutdoormedia.com

Real Estate

Curtis Massoud | (208) 938-8880
info@canyonoutdoormedia.com