

SIGN #
15L

BILLBOARDS MAKE A

BIG IMPRESSION!

**OUTDOOR ADVERTISING BILLBOARDS
IN BOISE, MERIDIAN, NAMPA,
FRUITLAND & PAYETTE, IDAHO**



Excellent left-hand read at the intersection of Nampa-Caldwell Blvd & Midland Blvd. This is the major artery linking Nampa and Caldwell and this intersection is adjacent to the busiest I84 interchange in Canyon County. Heavy commercial, retail and residential traffic.

CALDWELL BLVD & MIDLAND BLVD, NAMPA ID

SIGN #: 15L

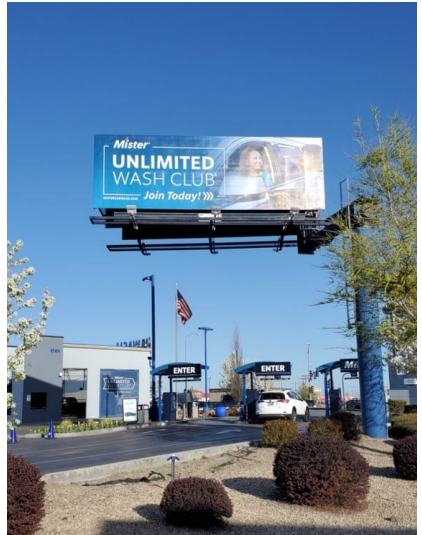
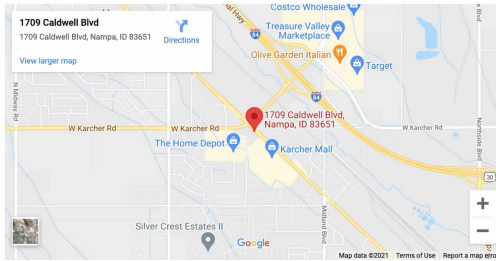
ILLUMINATED: YES

WEEKLY IMPRESSIONS: 98,589

SIZE: 10' X 30'

SIGN FACING: EAST / LEFT

LAT/LONG: 43.604475, -116.60251



**INTERESTED IN OUR SERVICES?
WE'RE HERE TO HELP!**

General Contact

P.O. Box 16661 Boise, Idaho 83715
9601 W State St, Boise, ID 83714
Phone: (208) 938-8880
Fax: (208) 938-8890

Administrative Team

David Wood or Raymond Usog
(208) 938-8880

davidwood@canyonoutdoormedia.com
raymondusog@canyonoutdoormedia.com

Advertising

Raymond Usog | (208) 283-2927
raymondusog@canyonoutdoormedia.com
David Wood | (208) 401-5159
davidwood@canyonoutdoormedia.com

Real Estate

Curtis Massoso | (208) 938-8880
info@canyonoutdoormedia.com