

SIGN #

08R

BILLBOARDS MAKE A

BIG IMPRESSION!

**OUTDOOR ADVERTISING BILLBOARDS
IN BOISE, MERIDIAN, NAMPA,
FRUITLAND & PAYETTE, IDAHO**



Garrity Blvd is one of the major commuter routes connecting the I84 freeway, to downtown Nampa and the South Nampa bedroom communities. This sign reads to traffic as it's heading Southwest into downtown.

1116 GARRITY BLVD, NAMPA ID

SIGN #: 08R

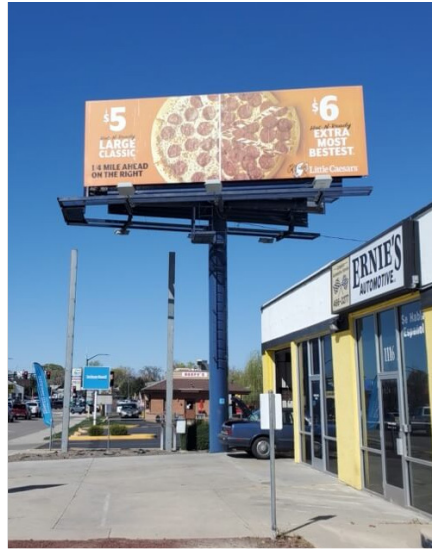
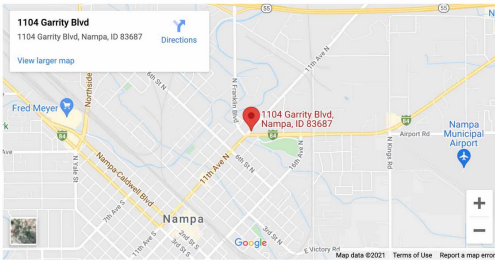
ILLUMINATED: YES

WEEKLY IMPRESSIONS: 120,451

SIZE:

SIGN FACING: **EAST / RIGHT**

LAT/LONG: 43.58679, -116.5502



**INTERESTED IN OUR SERVICES?
WE'RE HERE TO HELP!**

General Contact

P.O. Box 16661 Boise, Idaho 83715
9601 W State St, Boise, ID 83714
Phone: (208) 938-8880
Fax: (208) 938-8890

Real Estate

Curtis Massood | (208) 938-8880
info@canyonoutdoormedia.com

For sales information,
please contact our office

canyonoutdoormedia.com